



2025 PRESS KIT

# Redefining Outdoor Living Standards.



# Table of Contents



About Azenco Outdoor	<u>02</u>
Product Portfolio	<u>03</u>
Our Commitments	<u>09</u>
Notable Projects	<u>10</u>
Press Releases	<u>11</u>
Testimonials	<u>12</u>
Media Assets	<u>13</u>
Contact	<u>13</u>
Social Links	<u>13</u>





## We are part of Hunter Douglas Outdoor.

This strategic acquisition expands our reach, enabling us to favor local connections and investing in new manufacturing facilities. By combining our expertise, we aim to create **innovative solutions** for outdoor living spaces.

## Company Awards

**Inc.**  
**Regionals**  
SOUTHEAST  
2025



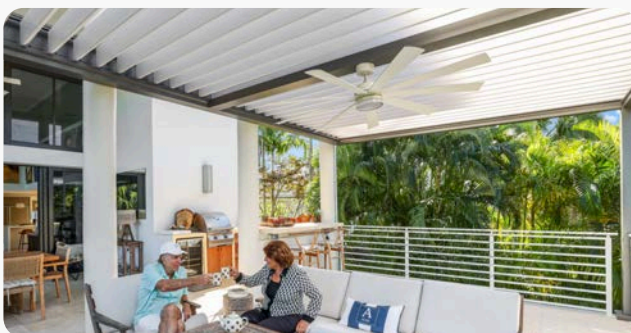
## Better Design

Our pergola collections go beyond being simple aluminum structures; their **superior design** enhances any architectural style.



## Better Quality

Established in the USA, we craft durable, sustainable outdoor covers with **precision engineering** and premium powder-coated aluminum.



## Better Experience

We combine efficient manufacturing and **certified dealer installations**, ensuring tailor-made outdoor solutions with unmatched lead time.

# R-BLADE™

MOTORIZED LOUVERED PERGOLA



A top-tier solution providing a unique outdoor experience, come rain or shine.

## Benefits

As a **bioclimatic** pergola, R-BLADE™ offers precise control over sunlight and shade with its innovative motorized adjustable louvers.

Whether you're seeking the comforting warmth of the sun or require protection for yourself, your guests, or your furniture, R-BLADE™ adapts **effortlessly** to your needs.

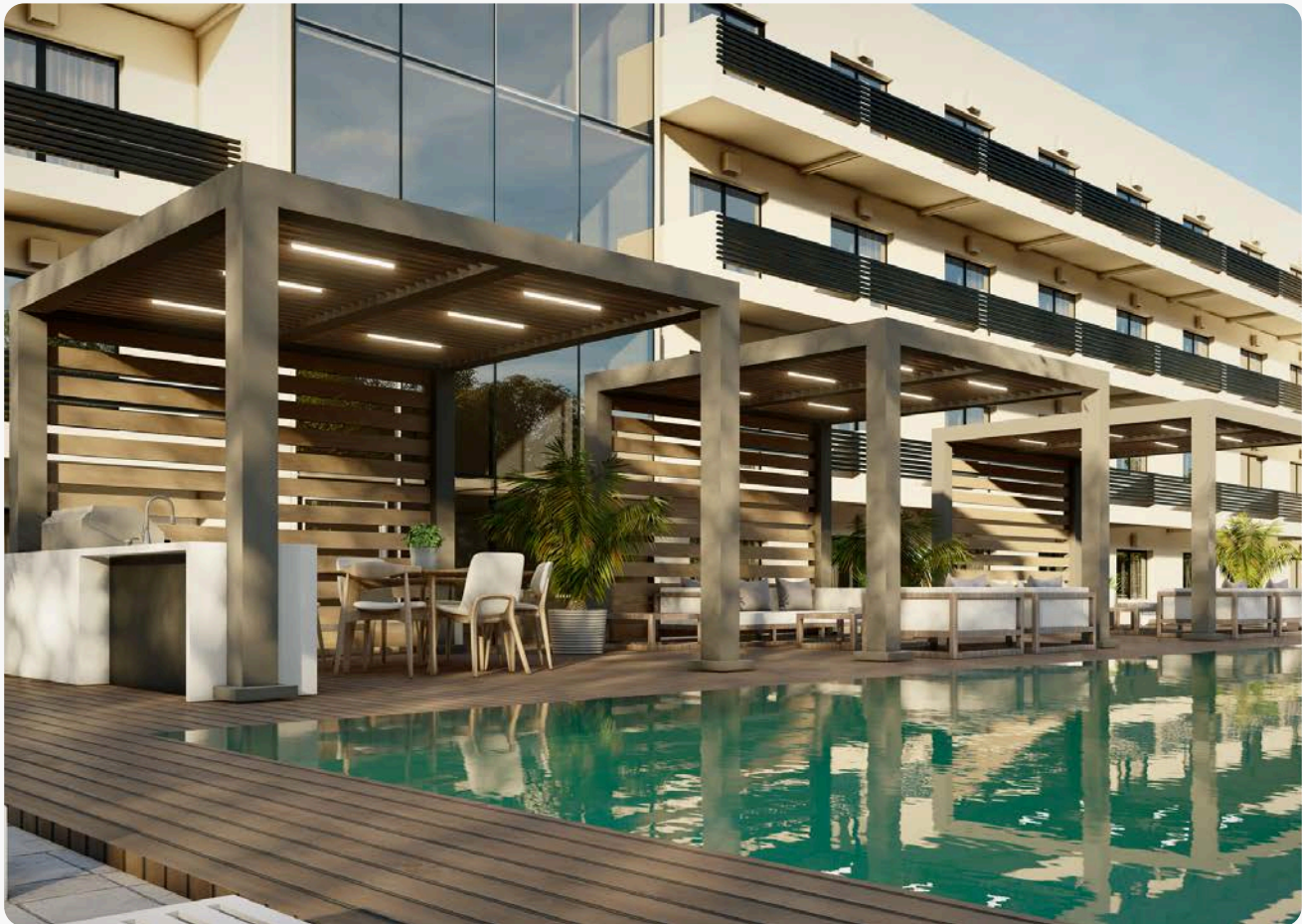
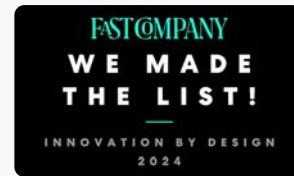
## Key Features

- ✓ **MOTORIZED DUAL-WALL LOUVERS**  
Effortless control of sun, shade, and airflow.
- ✓ **WHISPER-QUIET MOTORS**  
Silent and smooth for a serene experience.
- ✓ **SMART AUTOMATION**  
Sensors adjust settings to changing weather.



# R-BREEZE™

— FIXED LOUVERED PERGOLA



Prioritizes partial shade while seamlessly enhancing the visual appeal of any space.

## Benefits

Designed to create a delicate interplay of light and shadow, its lattice design provides just the right amount of shade while maintaining an **open and airy feel**.

Effectively delineating areas for any exterior space, this sculptural element adds a new dimension, creating **distinct volumes** and defining the character of each outdoor zone.

## Key Features

- ✓ **PATENTED PERGOLA SYSTEM**  
Innovative roof design with no-screw installation.
- ✓ **DUAL ROOF CONFIGURATION**  
Angled or Vertical Slats for custom shade control.
- ✓ **INTEGRATED SLATS LIGHTING**  
Built-in lighting for enhanced ambiance.

# K-BANA™

— MANUAL LOUVERED PERGOLA

Four-time award-winning pergola that redefines intimate accommodations.



## Benefits

Versatile, with **lighter features**, its modularity serves various applications. Combined, they are a perfect outdoor retreat. Freestanding, it is a stylish poolside lounge, or a cozy entertainment space.

Our manual louvered roof pergola is more than a simple cabana; it's a transformative addition to your **outdoor lifestyle**.

## Key Features

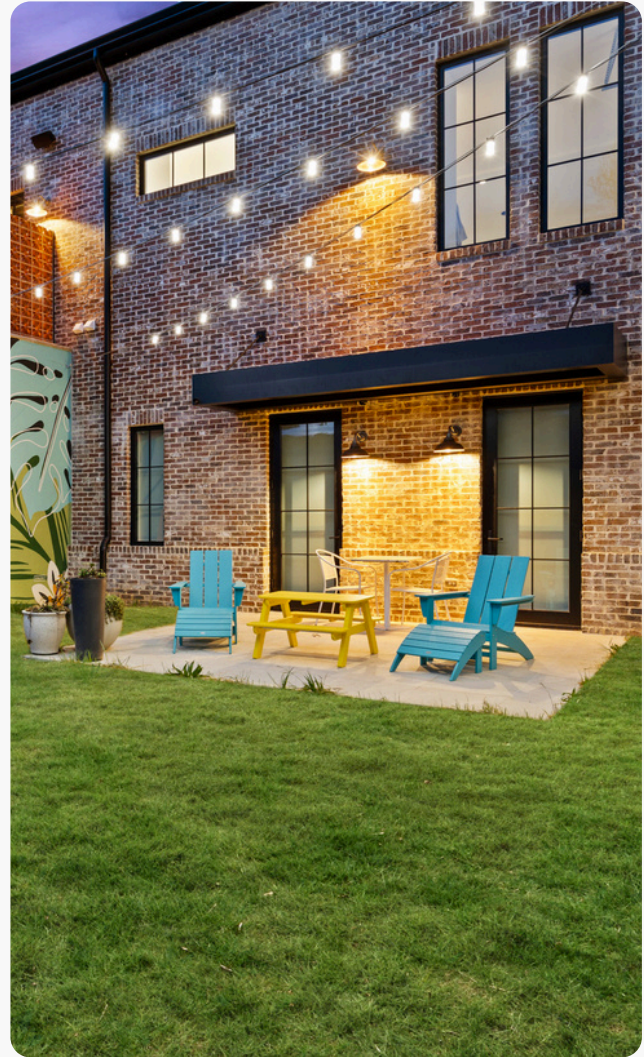
- ✓ **MODULAR DESIGN**  
Flexible configuration to fit any space or layout.
- ✓ **NO ELECTRICAL CONNECTION NEEDED**  
Fully functional with manual operation.
- ✓ **OFTEN PERMIT-FREE**  
Based on location and configuration.



# K-NOPY™

— PREMIUM ALUMINUM AWNING

Creating welcoming shaded facades with unmatched durability and sleek design.



## Benefits

Its innovative **cantilevered design** eliminates the need for vertical posts, providing **unobstructed access** and a clean, minimalist aesthetic.

Designed to shield specific areas like doors, windows, or entryways, our K-NOPY™ delivers **reliable coverage** without taking up unnecessary space.

## Key Features

- ✓ **SPACE EFFICIENCY**  
Maximizes coverage without using ground space.
- ✓ **CONCEALED HARDWARE**  
Hidden fasteners for a clean, seamless look.
- ✓ **POWDER-COATED EXTRUDED ALUMINUM**  
Weather-resistant with a durable finish.



# R-SHADE™

— PREMIUM INSULATED PATIO COVER

Say farewell to weather constraints with our insulated roof patio cover.



## Benefits

Designed for all-season use, the insulated roof minimizes heat transfer, ensuring a cool and comfortable space **365 days** a year.

Whether you're hosting gatherings, relaxing, or working outdoors, R-SHADE™ transforms patios into **versatile extensions** of your living space, regardless of the weather.

## Key Features

- ✓ **INSULATED ROOF PANELS**  
Comfort in any climate—cold, heat, or storms.
- ✓ **ENCLOSED ENVIRONMENT**  
Add screens and heaters for all-season versatility.
- ✓ **DURABLE WEATHER PROTECTION**  
Built to withstand the elements year-round.



# R-CAR™

— LUXURY INSULATED CARPORT

Protect your vehicle from the elements with robust coverage for your valuable assets.



## Benefits

The innovative R-CAR™ lets you experience the convenience of driving into a carport. Boasting the same benefits as our pergolas, it is a **sophisticated design** that effortlessly complements any architectural style.

The extended pillars not only minimize concerns about **accommodating multiple vehicles** or even a boat.

## Key Features

- ✓ **INSULATED ROOF PANELS**  
Shield from rain, snow, and harsh sunlight.
- ✓ **ENCLOSED ENVIRONMENT**  
Add screens and heaters for all-season versatility.
- ✓ **DURABLE WEATHER PROTECTION**  
Built to withstand the elements year-round.

## Eco-Design Philosophy

Our commitment to innovation goes beyond energy efficiency to all aspects of product design and manufacturing.



### Towards our Products.

We follow **eco-design principles**, using durable aluminum for longevity and reduced impact. Our **snap-fit** process minimizes waste and enhances recyclability, while **smart sensors** improve energy efficiency.



### Towards our Factory.

Our **automated smart manufacturing** boosts efficiency and sustainability. We **recycle aluminum** and minimize waste with digital, paperless operations.



### Towards our Planet.

As a 4ocean Certified Cleanup Partner, we are committed to removing **25,000 pounds of plastic waste** from oceans and coastlines to protect marine ecosystems.





## The Peninsula Hotel

New York, NY

On the rooftop terrace, our R-BLADE™ creates a **sophisticated**, weather-adaptive space perfect for **after-work gatherings**. The motorized louvers adjust to changing conditions, ensuring guests can savor cocktails and stunning skyline views in comfort. This enhancement elevates the hotel's ambiance, providing an **exclusive venue** for events and outdoor dining area.

## First Watch

Maryville, TN

First Watch expanded its outdoor dining area with a custom 500 sq ft R-SHADE™ patio cover. The black pergola **complements** the restaurant's modern aesthetic, while integrated lighting and fans ensure **guest comfort**. This addition increases seating capacity and provides a comfortable, **weather-protected** space, boosting customer satisfaction and driving **stronger ROI**.



## Arlo Hotel

Miami, FL

Our custom cabanas at the Arlo Hotel's rooftop pool in Miami transform the space into a luxurious **VIP retreat**.

Designed for both privacy and comfort, guests can enjoy a **premium poolside experience** in any weather. These cabanas enhance the hotel's atmosphere, offering a unique draw for guests that increases both appeal and **revenue potential**.

## Some Of Our Clients

ASTON MARTIN  
RESIDENCES  
MIAMI

  
**Hilton**  
HOTELS & RESORTS

  
**ST REGIS**  
HOTELS & RESORTS

  
**Marriott**  
HOTELS · RESORTS · SUITES

**HYATT**  
HOTELS & RESORTS





### Azenco Outdoor Debuts K-NOPY™ Premium Aluminum Awning for 2025

**Miami, FL – (January 8, 2025)** – Azenco Outdoor, leader in luxury outdoor living style, has announced its latest product addition: the K-NOPY™ premium aluminum awning. Complementing the brand's award-winning K-BANA™ and R-BLADE™ solutions, the K-NOPY™ combines high style with low maintenance, offering a versatile, all-in-one solution for both residential and commercial spaces.

[View Here](#)

### Azenco Outdoor's Best-Selling R-BLADE™ With Home Integration System Delivers Seamless Control with Bond Bridge Pro

**Miami, FL – (November 25, 2024)** – Azenco Outdoor, a leader in outdoor living innovations, has announced new technology integrations for its best-selling R-BLADE™ pergola. Known for its customization options and durable design, the award-winning R-BLADE™ features smart sensors, motorized louvers, and expanded compatibility with smart home systems.

[View Here](#)

### Azenco Outdoor Unveils Highly Anticipated K-BANA™ 2.0 Pergola

**Miami, FL – (Sept 10, 2024)** – Azenco Outdoor, a leading innovator in outdoor living solutions, is pleased to announce highly anticipated enhancements of the K-BANA™, unveiling exciting upgrades to its best-selling award-winning pergola. This new model combines luxury, portability, and user-friendly customization to transform any outdoor space into a zen-like environment.

[View Here](#)

### Azenco Reveals Never Before Seen R-BREEZE™ One-of-a-Kind Fixed Louvered Pergola at IBS Las Vegas

**Miami, FL - (March 1, 2024)** – Luxury outdoor living brand Azenco Outdoor is thrilled to announce its launch of R-BREEZE™, a one-of-a-kind fixed louvered pergola just in time for Spring home upgrades. The brand revealed the newest structure at the NAHB International Builders' Show® (IBS) February 27-29 in Las Vegas to industry insiders to much anticipation.

[View Here](#)



# Testimonials



## Residential Spaces

JoJo Fletcher and Jordan Rodgers transformed their Puerto Rican home's outdoor space with Azenco Outdoor's R-BLADE™ pergola. They praised its **clean design** and motorized louvered roof, which allows them to enjoy the outdoors comfortably in various weather conditions. The pergola has become a **central feature for relaxation** and entertaining, enhancing their tropical lifestyle.



## Commercial Spaces

Ann Jennings, owner of Scoreboard Bar and Grill in Minnetonka, MN, shared how Azenco Outdoor's pergolas transformed their patio into a **vibrant, customer-friendly** space. The new setup not only attracted more guests but also created a welcoming environment where they can comfortably dine with their dogs, enhancing both **atmosphere and business growth**.

## For All Media Inquiries

Please Contact **Kori Mallett, ESCAL CONSULTING**

[kori@escalconsulting.com](mailto:kori@escalconsulting.com)

917.385.6444

## Links To Assets



High Resolution Images



Our Team and Factory



Logo & Brand Guidelines

[Find Here](#)

## Our Socials

Facebook	<a href="#"><u>/azenco.outdoor</u></a>
Instagram	<a href="#"><u>@azenco.outdoor</u></a>
LinkedIn	<a href="#"><u>/azenco-outdoor</u></a>
YouTube	<a href="#"><u>/@AzencoOutdoor</u></a>
Pinterest	<a href="#"><u>/AzencoOutdoor</u></a>